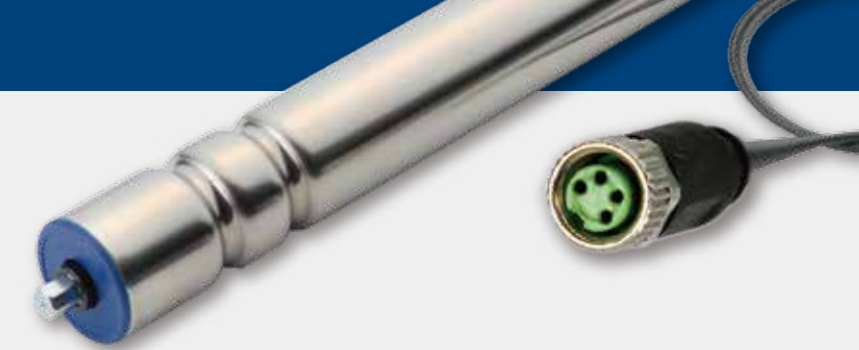


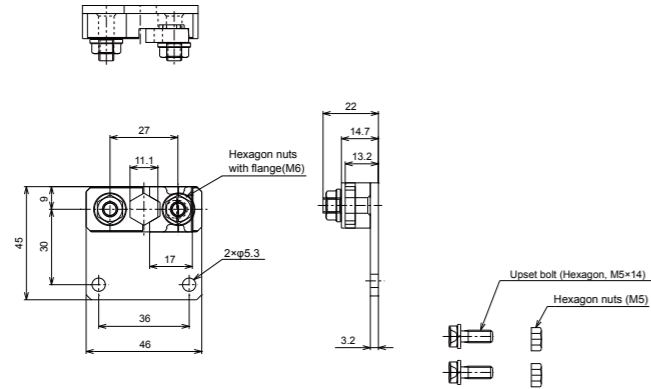
SENERGY-Ai



Bracket (for Non-threaded cable end shaft)

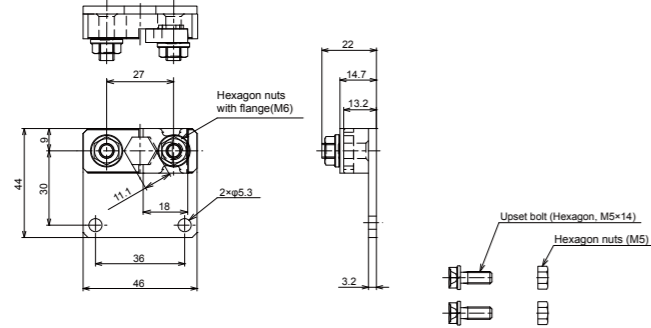
Standard accessory
(Cable side)

PR-D-30H-PU-N-ST
(Point-up)



* Note
Tightening torque (M6) : 8 ~ 10 N-m
Tightening torque (M5) : 2.3 ~ 3.5 N-m

PR-D-30H-FU-N-ST
(Flat-up)



* Note
Tightening torque (M6) : 8 ~ 10 N-m
Tightening torque (M5) : 2.3 ~ 3.5 N-m