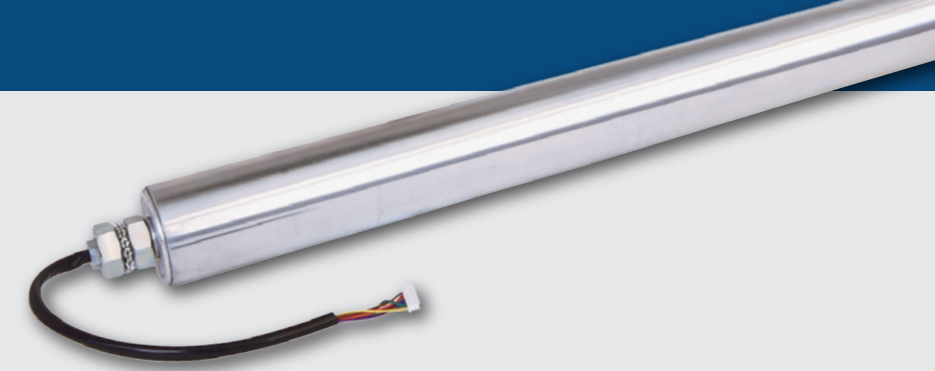


Drives

Pallet / Pallet-Ai



Product information

General information

- Tube material: Mild steel, zinc plating / Stainless steel (SUS304)
*Dia. 63.5 mm stainless tube is not available
- Roller diameter: 60.5 mm(2.38"), 63.5 mm(2.5")
- Min. tube length: 450 mm
- Max. tube length: 1800 mm
- Cable length: 500 mm (Pallet) / 900 mm (Pallet-Ai)
*Contact us for extension cables
- Motor connector: JST (Pallet) / M8-4pin (Pallet-Ai)
- Operation: 1.0 sec ON / 1.0 sec OFF duty cycle (Minimum)
or continuous within rated load

Compatible Control Technologies

SENERGY



*1 *2 Use high torque version of respective cards, EZ-24HTB or ConveyLinXHTF for pallet handling application.

SENERGY-Ai



Wall thickness

Diameter	60.5	63.5
Thickness	3.25	3.00

Unit: mm

Center point load capacity

Diameter (mm)	Roller length (mm)										
	500	600	700	800	900	1000	1100	1200	1300	1400	1500
60.5	661	661	661	661	529	396	330	286	242	220	198
63.5	661	661	661	661	573	462	374	330	286	264	242

* Even Load Distribution = Value Above * 3.5

* Unit: lb

Technical data

Voltage	DC24V
Nominal output	50W
Rated current	3.5A
Starting current	8.0A (Boost 8 mode with EZ-24HTB card)
Ambient temperature	10~104°F
Ambient humidity	10~90% RH (No condensation)

Roller weight table

Diameter (mm)	Roller length (mm)										
	500	600	700	800	900	1000	1100	1200	1300	1400	1500
60.5	17.9	19.0	19.8	20.9	21.8	22.9	23.8	24.7	25.8	26.7	27.8
63.5	19.8	20.9	22.3	23.4	24.7	26.0	27.1	28.4	29.5	30.9	32.2

*Weight indicates plain straight roller only. Sprockets, cams, etc. must be added Unit: lbs